

MY FAVORITE SPOTS and EVENTS



日本在住の外国人の方から日本国内で訪れて印象に残った観光地や、感動した事柄などについて寄稿いただきましたので、ご紹介します。今回は山田さつきさんからのご紹介で、アメリカ出身で名古屋在住3年のMs. Gwyneth Wilsonです。ご協力ありがとうございました。

皆様のお知り合いの外国人にも、日本滞在中に心に残った体験や文化的習慣など、ご紹介をお願いできませんか。ジャンルは問いません。投稿お待ちしております。

Three local places of charm and character

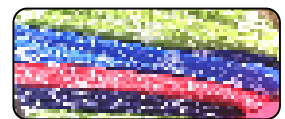
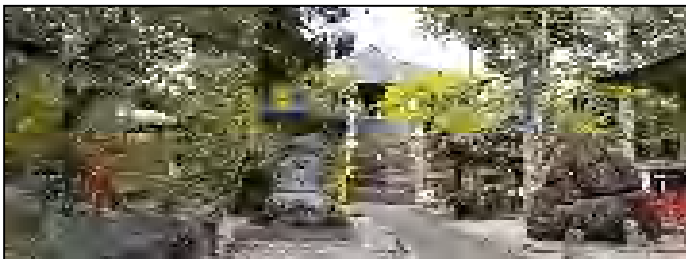
I have been lucky to enjoy the Aichi area for the past three years. There are so many interesting areas I have visited. I would like to share some of those places with you.

First is Inuyama Castle on the north border of Aichi. This small castle is filled with lots of charm and wonderful views of the landscapes of Aichi and Gifu can be seen easily from the tower balcony. I enjoy wandering around the town below and working my way up to see the castle. I always stop at the three shrines below the castle entrance.

The town of Arimatsu located south of Nagoya is a delightful little place that is full of beautiful textiles charming historical buildings in the heart of the town. I really enjoy shopping for shibori fabrics and visiting the Shibori Museum. I recommend visiting during one of their local festivals. It is a real treat to enjoy the festival with the local community.

Shinpuku Temple located near Okazaki is a beautiful temple tucked in the mountains. The temple compound is surrounded by so much nature that I felt very relaxed and left the busy city behind. This old temple has a lot of charm and the restaurant nearby has delicious foods. I also really enjoyed the museum next to the temple as well. It has a wonderful collection of bonsai trees, artifacts from the temple, and art.

I hope you can visit these places and enjoy them as much as I have.



Photos by Ms. G. W. "Precinct of the Shinpuku Temple, Arimatsu tie-dyeing and Inuyama Castle"

真福寺紹介： 参考 URL <https://www.shinpukuji.com/>

* 所在地：愛知県岡崎市真福寺町字薬師山6 本堂：TEL (0564) 45-4533

天台宗の寺院で本尊は薬師如来。竹膳料理が人気で、岡崎観光きりり百選に選定されている。

* アクセス：愛知環状鉄道大門駅[出口2]から徒歩約60分かかるので、車の利用をお勧めする。

Quizの答：（左から、カキツバタ、アヤメ、ハナショウブ）

見分け方：カキツバタは花びらの中央に1本の白い線

アヤメは虎の皮のような模様、ハナショウブは中央の線が黄色

Newsletter 87 号編集
鶯巣、松川